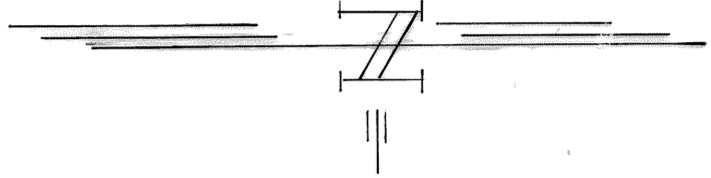
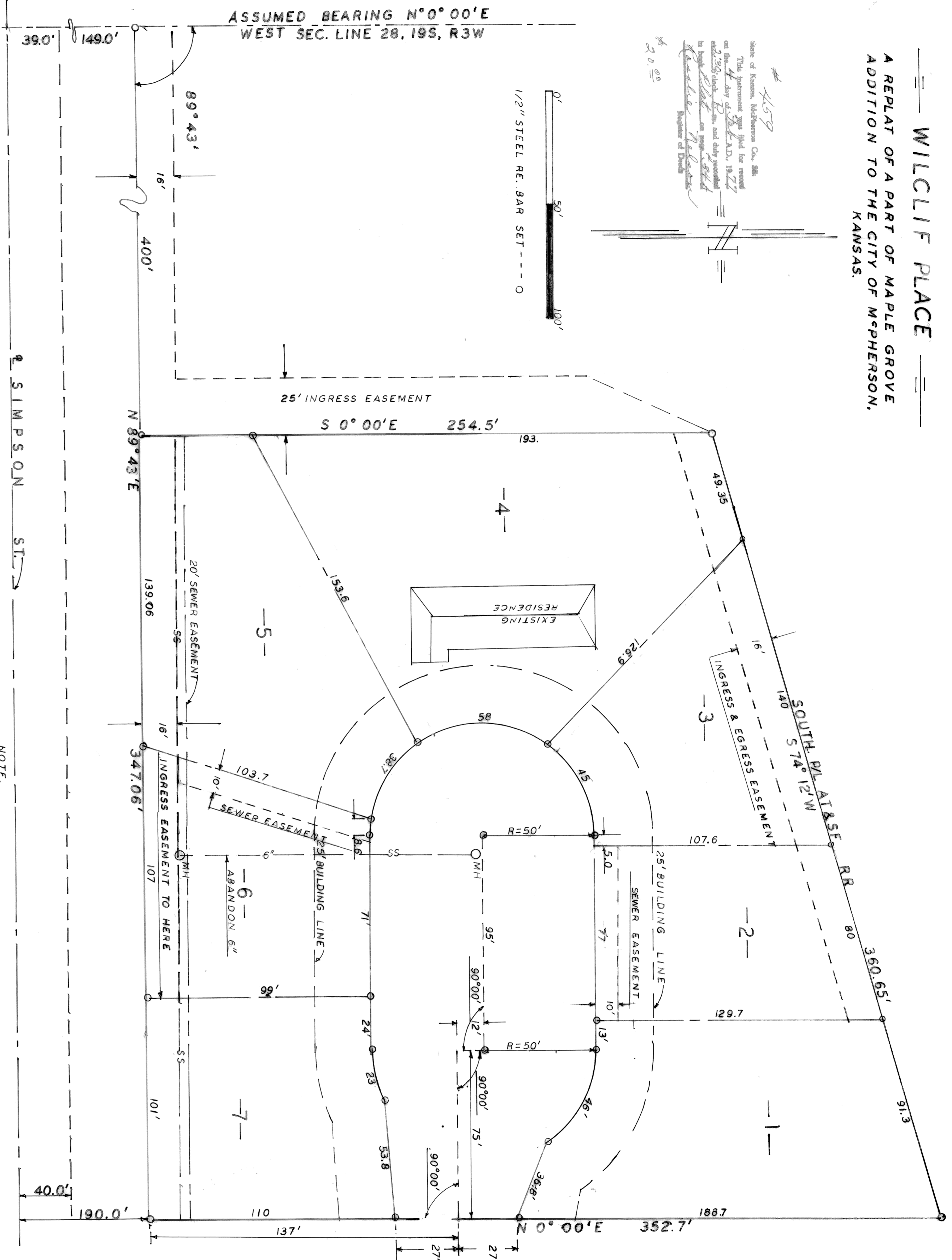


WILCLIFF PLACE
 A REPLAT OF A PART OF MAPLE GROVE
 ADDITION TO THE CITY OF McPHERSON,
 KANSAS.

459
 State of Kansas, McPherson Co., SS.
 I, the undersigned, am duly qualified for record
 on the 4th day of December, 1976,
 and duly recorded
 in Book 117, page 111,
 of the Public Records of Kansas.
 20 00



0' 50' 100'
 1/2" STEEL RE. BAR SET - - - O



NOTE:
 ESTABLISHED FLOOD INSURANCE ELEVATION 148300

DESCRIPTION
 COMMENCING 189.0' NORTH OF THE CENTER OF SIMPSON STREET, ON THE WEST SECTION LINE OF SECTION 28, T19S, R3W, SAID SECTION LINE ASSUMED TO BE N 0° 00' E THENCE EAST ON N 89° 43' E A DISTANCE OF 400.0' TO THE PLACE OF BEGINNING, THENCE CONTINUING N 89° 43' E A DISTANCE 347.06'; THENCE N 0° 00' E A DISTANCE OF 352.7'; THENCE S 78° 12' W ALONG THE SOUTH LINE OF THE A.T. & S.F. RAILROAD RIGHT-OF-WAY 360.65'; THENCE S 0° 00' E A DISTANCE OF 254.5' TO THE POINT OF BEGINNING, SAID TRACT CONTAINS 2.419 ACRES MORE OR LESS AND IS A PART OF THE NW 1/4 OF SECTION 28, T19S, R3W MC PHERSON COUNTY, KANSAS.

SURVEYORS CERTIFICATION
 STATE OF KANSAS)
) S.S.
 I, F.R. RANKIN, A LICENSED PROFESSIONAL ENGINEER OF THE STATE OF KANSAS, HEREBY CERTIFY THAT A SURVEY OF THE ABOVE TRACT WAS MADE UNDER MY SUPERVISION, SAID TRACT DIVIDED INTO LOTS AS SHOWN ON THE ABOVE PLAT, I FURTHER CERTIFY, THAT ALL LINES, BEARINGS AND DIMENSIONS ARE TRUE AND CORRECT SO FAR AS IT IS KNOWN TO ME AND SIGNED THIS 9th day of December 1976.

OWNERS CERTIFICATION
 STATE OF KANSAS)
) S.S.

This is to certify, that Clifford Beckwith (husband) and Wilma Beckwith (wife) owners of the above described tract and plat, and they have divided the same into lots for the purpose of re-sole, under the titles as hereon indicated.

Signed Clifford Beckwith
 Notary
 My Commission expires March 21, 1978
 Signed Wilma Beckwith
 Notary
 My Commission expires March 21, 1978

CITY ENGINEER APPROVAL
 STATE OF KANSAS)
) S.S.
 Be it known, that the attached Plat was submitted to me and that the same was hereby approved this 14th day of December, 1976,
 Signed Clifford Beckwith
 City Engineer

BOARD OF PUBLIC UTILITIES APPROVAL
 STATE OF KANSAS)
) S.S.
 Be it known, that the attached Plat was submitted to me and that the same was hereby approved this 14th day of December, 1976,
 Signed Clifford Beckwith
 Gen. Manager

Signed Clifford Beckwith
 City Engineer

CITY COMMISSION APPROVAL
 STATE OF KANSAS)
) S.S.
 Be it known that the attached Plat was submitted to the City Commission of the City of McPherson, Kansas and that it was approved, and entered into the official minutes of said Governing body on the 14th day of December, 1976,
 Signed Fred D. [Signature]
 Attest: [Signature]
 City Clerk

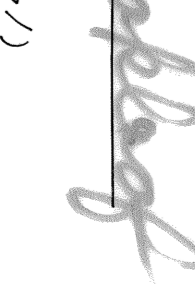
CITY ATTORNEY APPROVAL
 STATE OF KANSAS)
) S.S.
 Be it known, that the attached Plat was submitted to me, and that the same is hereby approved this 20th day of December, 1976,
 Signed Clifford Beckwith
 City Attorney

COUNTY ATTORNEY APPROVAL
 STATE OF KANSAS)
) S.S.
 Be it known, that the attached Plat was submitted to me, and that the same is hereby approved this 20th day of December, 1976,
 Signed Clifford Beckwith
 County Attorney

COUNTY ENGINEER APPROVAL
 STATE OF KANSAS)
) S.S.
 Be it known, that the attached Plat was submitted to me, and that the same is hereby approved this 20th day of December, 1976,
 Signed Clifford Beckwith
 County Engineer

COUNTY COMMISSION APPROVAL
 STATE OF KANSAS)
) S.S.
 Be it known, that the attached Plat was submitted to the County Commission, of McPherson County, Kansas and that it was approved and entered into the official minutes of said Governing body on the 14th day of December, 1976,
 Attest: Manuel [Signature]
 County Clerk

STATE OF KANSAS)
) S.S.
 Be it known that this instrument was filed for record in the Register of Deeds Office, at 1:30 pm, on the 14th day of Dec, 1976,
 Signed Clifford Beckwith
 Registrar of Deeds



(Sec 1)